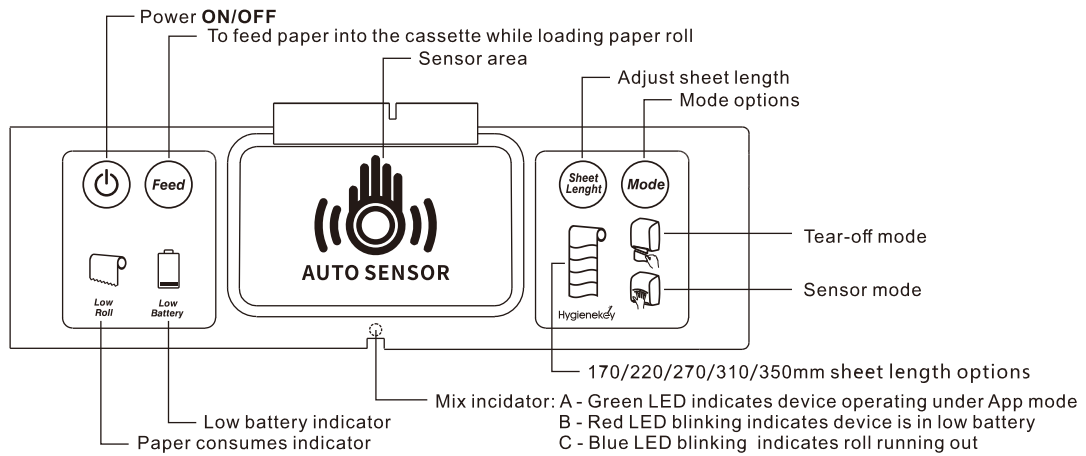
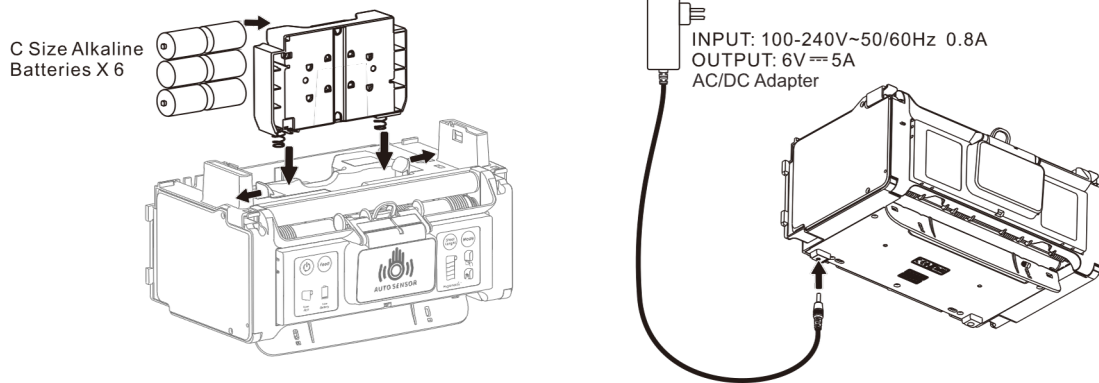


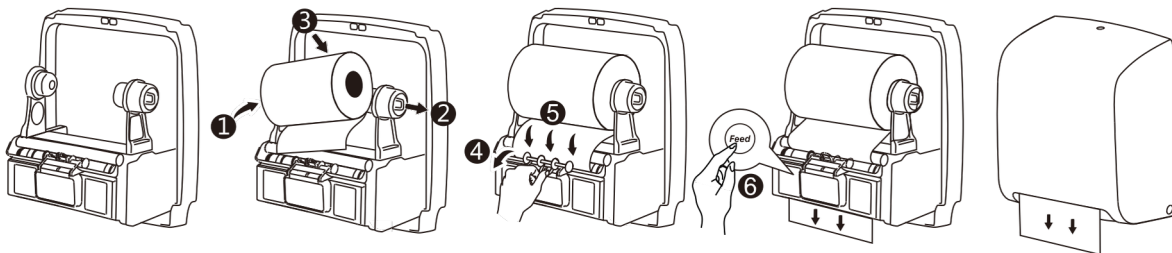
OPERATION INSTRUCTIONS



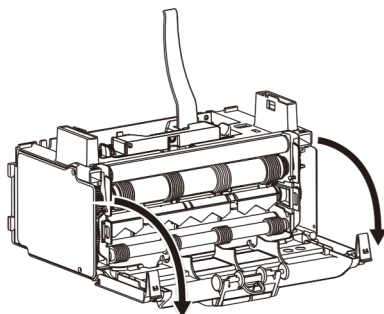
POWER SUPPLY



TOWEL LOADING

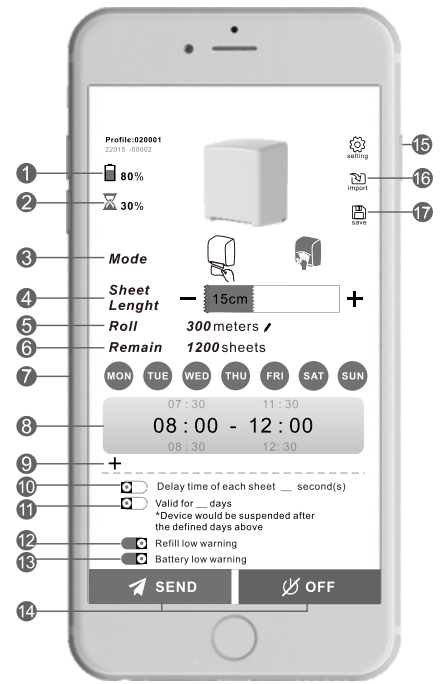
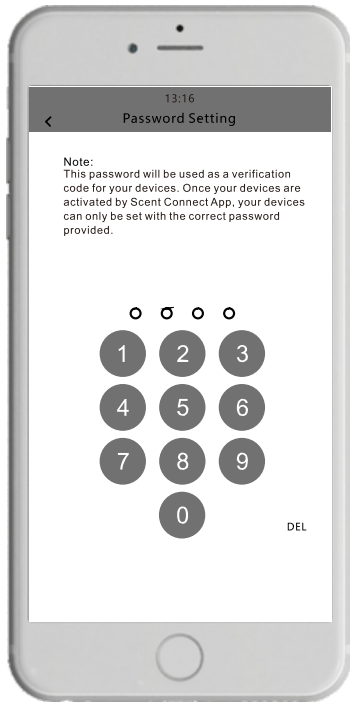


TROUBLE SHOOTING

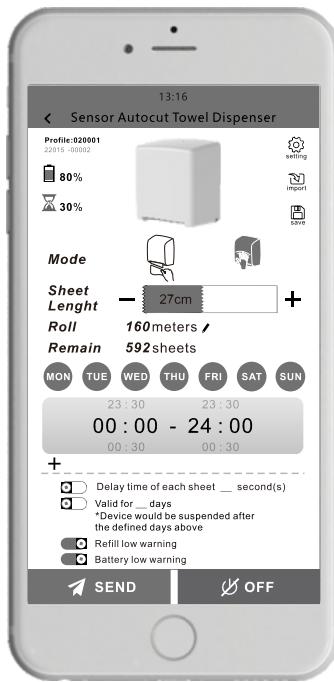
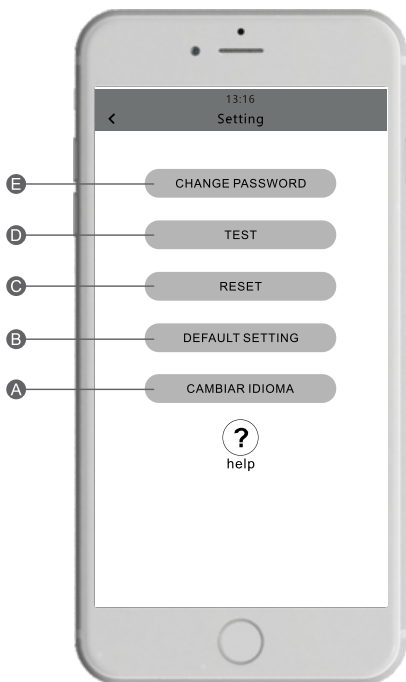


Open operation panel to clear paper jam if got stuck

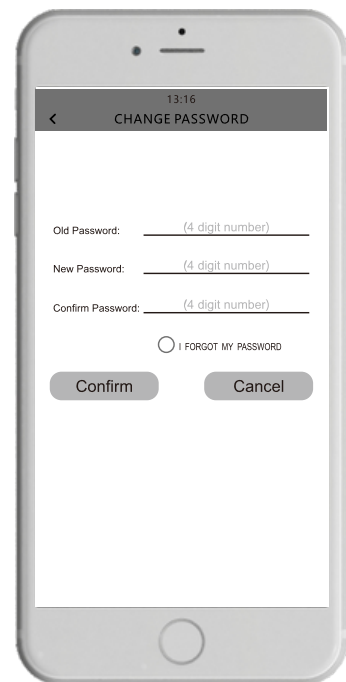
Default password is 1234



- 1 Indicating battery status
- 2 Indicating refill status
- 3 Tear-off mode Sensor mode
- 4 Adjust sheet length 15cm~60cm
- 5 Input the total length of a paper roll
- 6 Indicating remaining number of sheets
- 7 Program working days
- 8 Program working schedule
- 9 Add more working schedules, maximum 5 schedules
- 10 Program delay time
- 11 Program valid period
- 12 Activate/Deactivate low refill LED warning
- 13 Activate/Deactivate low battery LED warning
- 14 SEND Send program to dispenser
 OFF OFF: Stop working, put dispenser on hold
ON: Activate dispenser
- 15 Advanced setting page
- 16 Import setting from an existing profile
- 17 Save setting as a profile



Default Setting



- A Change language
- B Default Setting
- C Reset dispenser

- D Have a demo activation
- E Change password



Google play



APP store